

MADICO® SAFETYSHIELD® 1500

Test Data:

Blast Performance/GSA Criteria

<i>Pressure/Impulse</i>	<i>Performance Condition</i>
12.78 PSI/78.79 PSI-ms	3A
9.0 PSI/72.8 PSI-ms	3B

Anti-Intrusion/Security Glazing

UL-972 / ULC-332. Certified
 EN-356. Category P2A
 DIN-52,290 Category A1
Meets or exceeds Anti-Intrusion Safety Glazing Standards in North America and Europe.

Puncture & Tear Strength

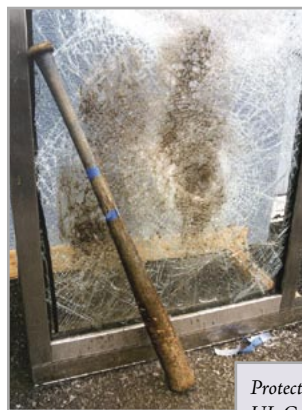
ASTM D-2582 102.2 Average
 Tear Force (Newtons)

Surface Burn Characteristics: ASTM E-84

Flame Spread Index "A" Rating
 Smoke Developed Index "A" Rating

Ignition Properties: ASTM-D-1926-96

Flash Ignition Temp. 760° F
 Self-Ignition Temp. 880° F



*Protected by Madico SafetyShield 1500
 UL Certified Anti-Intrusion System.*

Properties:

Optical Properties

Total Solar Energy

Transmitted82%
Reflected10%
Absorbed	8%

Visible Light

Transmitted88%
Reflected Interior10%
Reflected Exterior10%

"U" Factor 1.09

Ultraviolet Light Rejected99%
Shading Coefficient097
Solar Heat Gain Coefficient084
Total Solar Energy Rejected15%

Physical Properties

Film Thickness.	0.015"
Structure	Multiply Laminate
Tensile Strength	32,000 PSI
Break Strength	450 lbs./inch (Width)
Adhesive Type	Acrylic PSA
Peel Strength	5 to 6 lbs./inch



Top: Annealed Glass
 Filmed with Safety-
 Shield 1500.

Middle: A category
 D blast load, 2500
 pounds High Explo-
 sive is detonated.

Bottom: Shock wave
 impacting treated
 window with Safety
 Shield 1500 and
 4 side FrameGard®
 anchoring system.

MADICO

ISO 9001: 2000 Certified

64 Industrial Parkway, Woburn, MA 01801

p 800 225 1926 • 781 935 7850

f 781 935 6841 • www.madico.com

Charter member of the IWFA

WHEREVER THERE IS GLASS, WE CAN *improve* IT.